

# VALVES - SOLENOID MEDIUM PRESSURE WITH 5 LB. SPRING

MODEL: 1272 - SVM - 5

Revision: 0

BULLETIN  
1272

## DESCRIPTION

The SVM5 solenoid valve includes a 5 lb. closing spring to meet I.R.I. (F.I.A.) requirements, as the downstream shutoff valve in the “block and vent” system. These valves are electrically operated solenoid type on-off gas valves for main line service. Suitable for all types of gas fired heating equipment.

Normally closed – close on current failure. Replaceable coil for simplicity of field service. UL listed.

## SPECIFICATIONS

Service ..... Natural, manufactured, mixed, and LP gases, scrubbed coke gas, and scrubbed/dried sewer gases.

Body Material ..... Aluminum

Seals and Discs ..... Buna – N

Electrical current ..... 120v - 60 Hz  
59.5 watts AC, 600 VA inrush, 122 VA holding  
66.0 watts, 936 VA inrush, 128 VA holding

Electrical wiring ..... 2 – wire control circuit. Replaceable coil.  
Solenoid jacket rotates 360°. 18” wire leads.

Coil Insulation ..... Class “H” coil



6SVM-5

## FEATURES

- Normally closed on current failure.
- Tight shutoff.
- Rotatable solenoid - replaceable coil.
- UL and CSA Listed.
- FM Approved safety shutoff 3/4” only.
- All types of gases.

## CAPACITY TABLE

Catalog Number	Pipe Size NPT (inches)	Orifice Size (inches)	Cv Flow Factor	Gas Capacity * (Btu/Hr.)	Operating ** Pressure Differential (psi)		Fluid & Ambient Temperature (°F)		Watt Rating/ Class of Coil Insulation AC	Power Consumption		UL	FM	CSA
					Min.	Max.	Min.	Max.		VA Holding	VA Inrush			
1272--6SVM-5	3/4	1-5/8	12.2	650,000	0	20	32	104	59.5/H	122	600	X	X	X
1272--8SVM-5	1	1-5/8	24.0	1,290,000	0	20	32	104	59.5/H	122	600	X		X
1272--10SVM-5	1-1/4	1-5/8	35.0	1,900,000	0	20	32	104	59.5/H	122	600	X		X
1272--12SVM-5	1-1/2	1-5/8	40.0	2,145,000	0	20	32	104	59.5/H	122	600	X		X
1272--16SVM-5	2	2-3/32	60.0	3,241,000	0	20	32	104	59.5/H	122	600	X		X
9999--20SVM-5	2-1/2	3	120.0	6,467,500	0	5	32	104	66/H	128	936	X		X
9999--24SVM-5	3	3	130.0	7,002,500	0	5	32	104	66/H	128	936	X		X

\* 1” W.C. Drop @ 2” W.C. Inlet Pressure, 1,000 Btu/Cu. Ft. or more, 0.64 Specific Gravity Gas

\*\* Fuel Gas Service Only

Must be mounted with solenoid vertical and upright for maximum life.

CAUTION: Operation of combustion equipment can be hazardous resulting in bodily injury or equipment damage. Each burner should be supervised by a combustion safeguard and only qualified personnel should install, make system adjustments and perform any required service.



**pyronics inc.**

COMBUSTION FOR INDUSTRY  
17700 MILES ROAD  
CLEVELAND, OH 44128  
www.pyronics.com

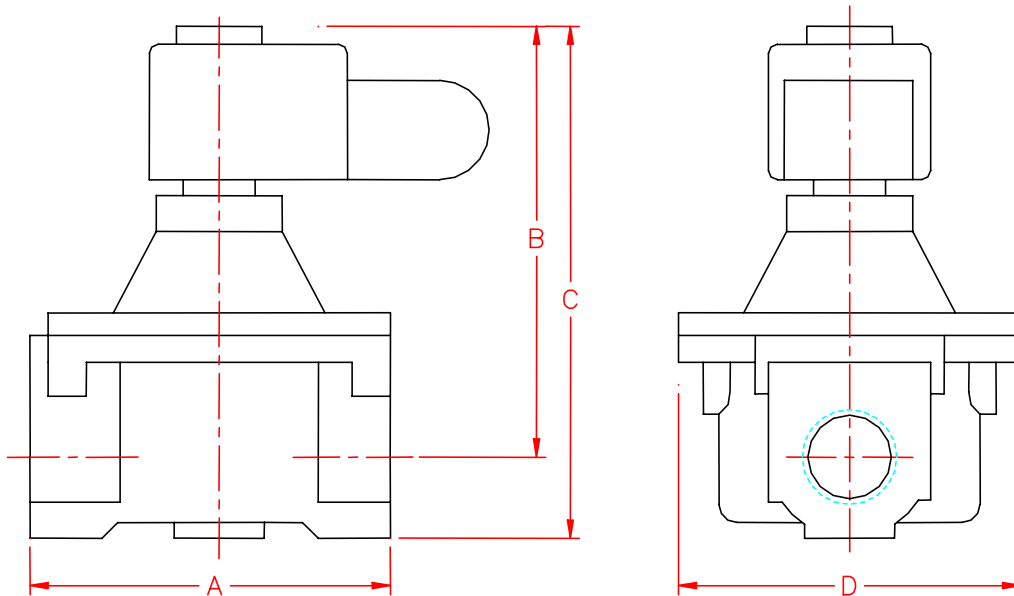
Tel: 216-662-8800  
Fax: 216-663-8954  
marketing@pyronics.com

NOTICE: PYRONICS practices a policy of continuous improvement in the design of its products. It reserves the right to change the specifications at any time without prior notice.

# VALVES - SOLENOID MEDIUM PRESSURE WITH 5 LB. SPRING

BULLETIN 1272  
PAGE NO. 2

## DIMENSIONS



Model Number	Pipe Size NPT	A	B	C	D	Weight	
						Lbs.	Kgs.
6 SVM-5	3/4	5.00	6.34	7.65	5.39	6.45	2.93
8 SVM-5	1	5.00	6.34	7.66	5.38	5.90	2.68
10 SVM-5	1-1/4	5.00	6.39	7.66	5.38	5.90	2.68
12 SVM-5	1-1/2	5.00	6.39	7.66	5.38	5.90	2.68
16 SVM-5	2	6.09	6.86	8.36	6.32	7.10	3.22
20 SVM-5	2-1/2	7.80	7.89	10.22	7.99	5.60	2.54
24 SVM-5	3	7.80	7.89	10.22	7.99	5.70	2.59

NOTE: All dimensions are in inches.

## ORDERING INFORMATION

1. Specify Model Number and Quantity
2. Shipping Instructions