

# VALVES VENT

MODEL: 1241 - VV

Revision: 0

BULLETIN  
1241

## DESCRIPTION

The 1241-VV is generally used as the vent valve located between the two blocking valves in the "block and vent" systems. They are used in both the pilot and main lines in gas fired systems.

Vent valves are normally open, internal pilot operated solenoid valves. All valves have a general purpose NEMA type 1 enclosure. These valves, 3/4" to 1-1/2", are designed to perform properly when mounted in any position. However, for optimum life and performance, the solenoid should be mounted vertical and upright so as to reduce the possibility of foreign matter accumulating in the core tube area. The 2" valve must be mounted with solenoid vertical and upright or in a horizontal position.

## SPECIFICATIONS

Service ..... Natural, manufactured, mixed, and LP gases.

Body Material ..... 3/4" bronze  
1" to 2" aluminum

Seat Type ..... Buna - N, soft seat

Electrical ..... 15.4 watts, 34 amps in-rush, 15.6 amps holding, 120 V/60 Hz, class A coil suitable for 77° F, 2-wire control circuit, solenoid jacket rotates 360°, 1/2" conduit connection, 6" wire leads.

## VENT PIPE SIZES

- |  |   |
|--|---|
| 1. If the main line is less than 3/4", then the vent line shall be equal to the cross sectional area of the main line. | 2. The vent valve port (orifice) shall have a cross sectional area equal to the specified vent valve. |
|--|---|

Fuel Line Diameter	Vent Line Diameter
Up to 1-1/2"	3/4"
2"	1"
2-1/2" - 3"	1-1/4"
3-1/2"	1-1/2"
4" - 5"	2"



## FEATURES

- Normally open on current failure.
- Soft seat.
- Rotatable housing.
- Replaceable coil.
- UL - CSA approvals.

## APPROVALS



CAUTION: Operation of combustion equipment can be hazardous resulting in bodily injury or equipment damage. Each burner should be supervised by a combustion safeguard and only qualified personnel should install, make system adjustments and perform any required service.



**pyronics inc.**

COMBUSTION FOR INDUSTRY

17700 MILES ROAD  
CLEVELAND, OH 44128  
www.pyronics.com

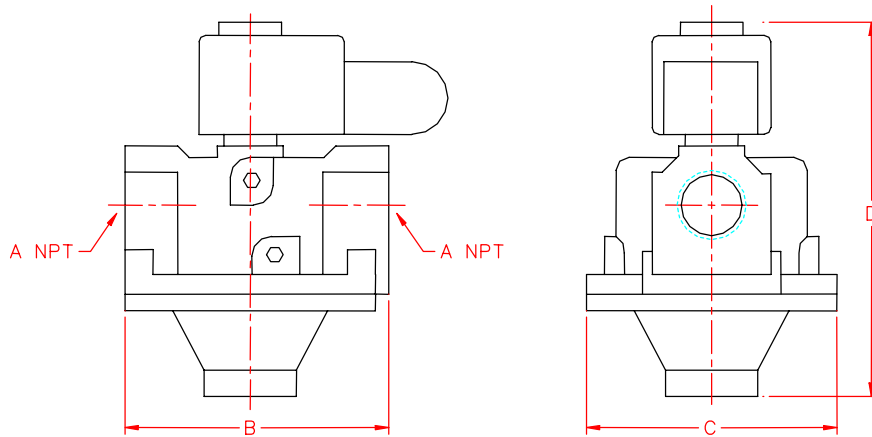
Tel: 216-662-8800  
Fax: 216-663-8954  
marketing@pyronics.com

NOTICE: PYRONICS practices a policy of continuous improvement in the design of its products. It reserves the right to change the specifications at any time without prior notice.

# VALVES VENT

BULLETIN 1241  
PAGE NO. 2

## DIMENSIONS



Model Number	A	B	C	D	Weight	
					Lbs.	Kgs.
6VV	3/4	5	5-3/8	6-13/16	2.5	1.13
8VV	1	5	5-3/8	6-13/16	3.8	1.72
10VV	1-1/4	5	5-3/8	6-13/16	3.9	1.77
12VV	1-1/2	5	5-3/8	6-13/16	4.0	1.81
16VV	2	6-3/32	6-5/16	7-7/16	5.5	2.49

NOTE: All dimensions are in inches.

## CAPACITY TABLE

Model Number	Pipe Size NPT (inches)	Orifice Size (inches)	Cv Flow Factor	Gas Capacity *	Operating Pressure Differential (psi)		Fluid & Ambient Temperature F		Watt Rating / Class of Coil Insulation	Power Consumption	
					Min.	Max.	Min.	Max.		VA Holding	VA Inrush
					Btu/Hr.						
6VV	3/4	1-5/8	11	659,000	0	5	- 40	125	20/F	43	240
8VV	1	1-5/8	21	1,179,000	0	5	- 40	125	20/F	43	240
10VV	1-1/4	1-5/8	32	1,538,000	0	5	- 40	125	20/F	43	240
12VV	1-1/2	1-5/8	35	1,615,250	0	5	- 40	125	20/F	43	240
16VV	2	2-3/32	60	2,924,500	0	5	- 40	125	20/F	43	240

\* 1" W.C. Drop @ 2" W.C. Inlet Pressure, 1,000 Btu/Cu. Ft. or more, 0.64 Specific Gravity Gas.

## ORDERING INFORMATION

1. Specify Model Number and Quantity
2. Shipping Instructions